



A woman wearing a red safety vest and glasses is looking at a laptop. The laptop screen displays the QIZOM dashboard, which features a map of India with a highlighted area in the center. The dashboard also shows various data points, including US AQI 156, PM2.5 123.92, and PM10 66.59. The background is a blurred industrial setting.

About Envizom™



Envizom™ is an air quality monitoring software for real-time air quality data acquisition, visualization, and analytics. The Oizom® environmental data interpretation engine fetches the data from the Oizom® Environmental monitoring stations. On receiving the data, the engine runs necessary corrections and compensation algorithms. Envizom™ uses secured HTTPS servers for data storage. Alternatively, this data can also be stored on local servers.

The Dashboard module shows the data in different chart formats, whereas, in the Overview module, the devices can be seen geo-mapped to their respective locations. In addition, Envizom™ also offers advanced modules like automated reports, smart alerts, and process automation.

Envizom™ Features



Real-time data

Envizom™ platform offers real-time data visualization of all environmental parameters.



Smart alerts

Set alerts based on predefined threshold values and send notifications to the respective users through SMS, Email and push notifications.



User friendly interface

Envizom™ platform is user-friendly and navigation across modules is hassle-free and interactive.



Endorse your brand

Users can customize their Envizom™ platform and endorse their brand by updating their logo in the application.



Process automation

Enable process automation using our relay-based module and set thresholds to automate the integrated systems.



Easy to Set Up

A simple two-click setup application for users to access data remotely on any web browser.



One click share

Users can share quick custom reports or share magic links for login with desired users from the application with a single click.



Data accessibility

Access real-time data on the go from any internet power device like, a laptop, tablet, mobile phone, etc.



Easy to integrate

Through our REST APIs, data from all the Oizom equipment can be integrated into any third party platform.



Set clusters

Users can create their own clusters by combining data points based on the location e.g. residential, industrial, city.

Why Choose **Envizom™**

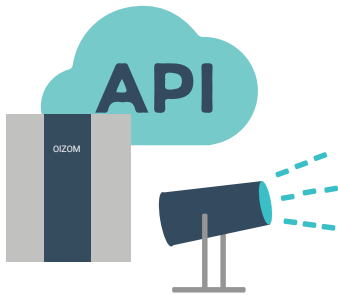


2 level user management

Envizom™ air quality monitoring platform has a two-level hierarchy with Admin users and sub-users. Admin users have all the rights to add, edit and delete sub-users as per the requirement. Admin users also control the number of visible devices and modules under each sub-user.

Tech support

Oizom® provides remote and on-field technical support. We also have a ticketing system to maintain all support-related issues. We retain an SLA of 24 hours for better understanding and clarity of the issues. The technical team helps the onsite team to carry out initial troubleshooting of the issue.

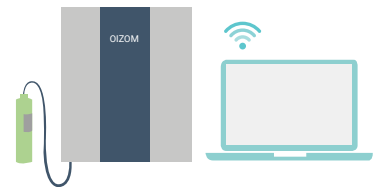


Supports third party devices

Envizom™ can integrate third-party devices using APIs. So, users can access and analyze environmental data from multiple devices on a single platform.

Calibration module

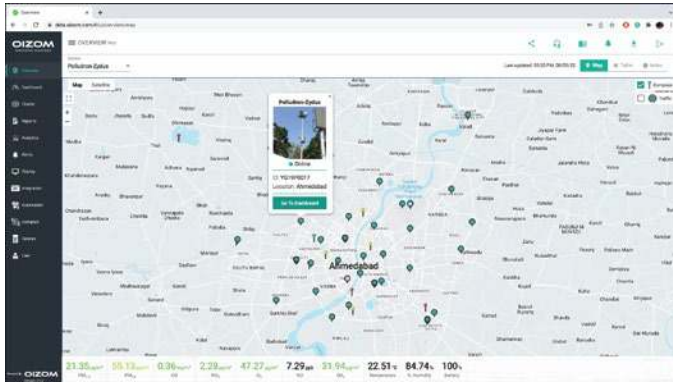
Envizom™ provides a device calibration module. This module enables our partners and users to calibrate Oizom® monitors in the lab and on-site. Users can also view and access historical calibration data from the platform.



Remote diagnostics

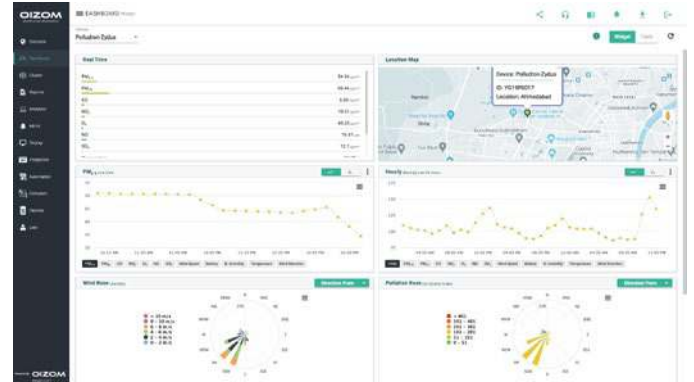
Oizom® architecture is built in a way to carry out remote diagnostics of the device. The Oizom® tech team carries out regular remote diagnostics of the devices. Based on various data points, the health of the device is also regulated.

Envizom™ Modules



Overview

Overview module provides you with a bird's eye view of the Oizom® devices and the real-time air quality index with data of various parameters.



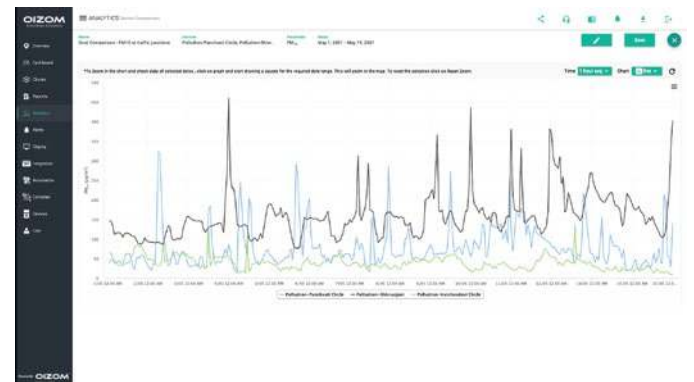
Dashboard

Dashboard is a complete visualization module for you to analyse the environmental data from the device.



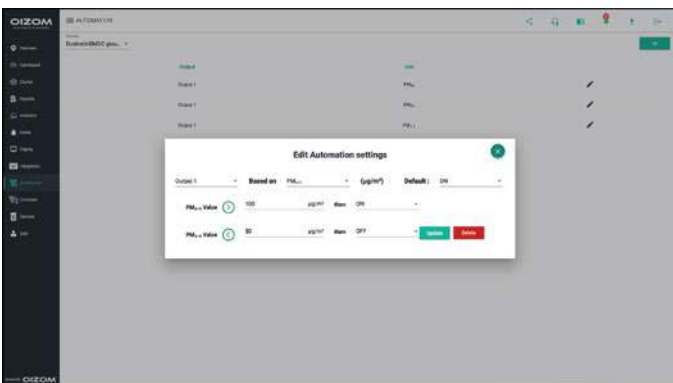
Cluster

Cluster module lets you group specific devices and can display an average of your selected devices' data.



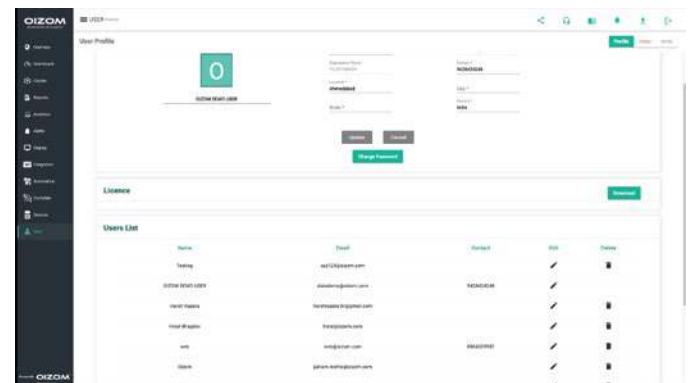
Analytics

Analytics module enables you to review comprehensive analysis of environmental data.



Automation

Automation module can be used to toggle a relay-based switch, of an external equipment.



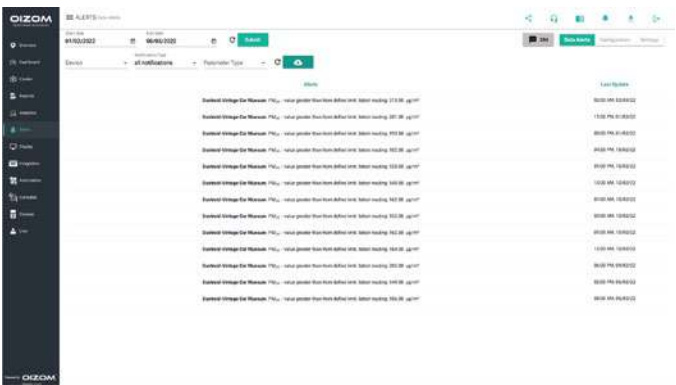
User Role Management

The User Role Management module provides the option to create multiple user accounts and AQI selection based on geography.



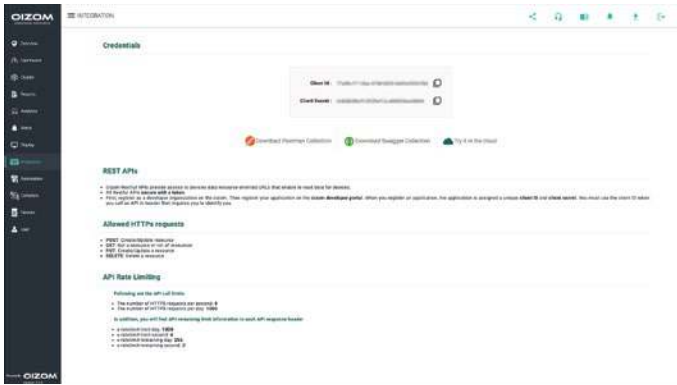
Reports

Reports module lets you control the automated report generation for each device. These are print ready reports with interactive charts and analysis.



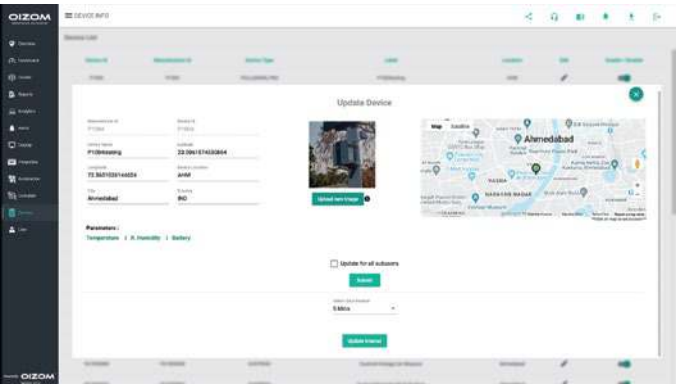
Alerts And Notifications

The Alerts Module provides alerts to the user for added specific conditions through sms and emails.



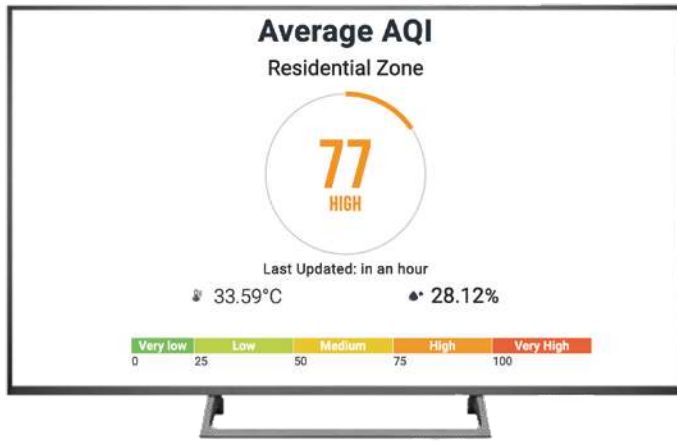
Integration

API Integration is used for seamless communication with third party tools. API enables interaction between data, applications, and devices.



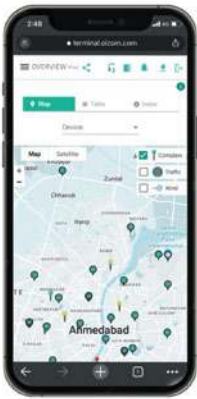
Device Management

The Devices module helps you to view and edit your device information. You can see all your registered devices on one screen .



Display

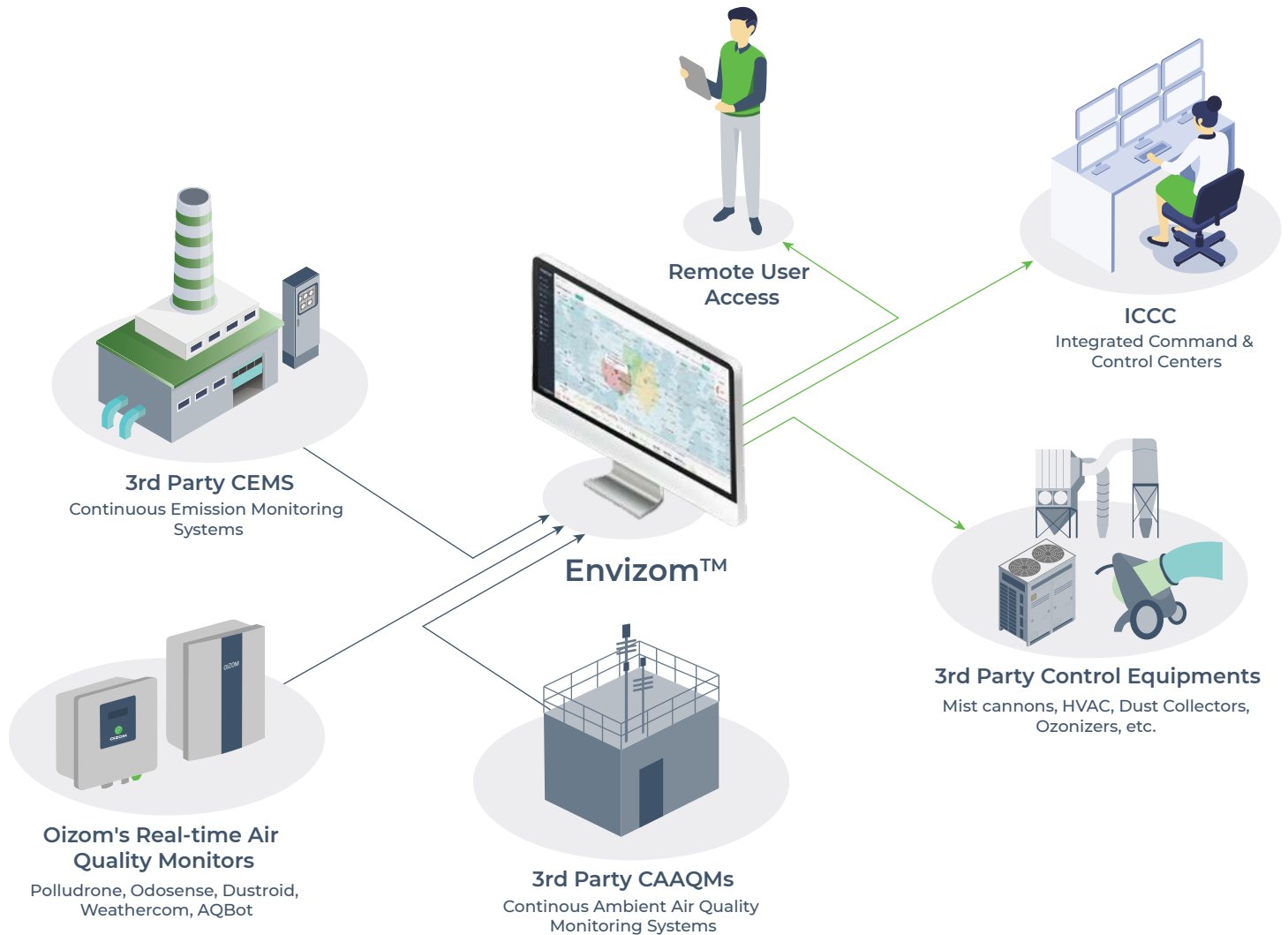
The Display module is used to create customizable screen displays for all types of screens.



Mobile App

This terminal portal is also mobile compatible. Users can open the link in their mobile's browser.

System Architecture

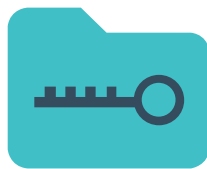


Privacy First Platform



Data Privacy

The data shared with the client uses an encryption server through HTTPS Secure Socket layers. Envizom™ also uses AES encryption for connection that adds to data safety.



Data Ownership

Envizom™ creates a secured and encrypted password combination for the user login. Oizom® ensures 100% privacy of the data and doesn't share without relevant permissions.



Data Transparency

Data collected from Oizom® equipment runs through the Environment Data Interpretation Engine. It processes various algorithms and eliminates environmental impact interferences on the sensors.

Envizom™ Capabilities



Visualization & Analytics

With our web-based air quality monitoring software – Envizom™, the professionals can access and analyze the air quality data remotely from anywhere. Users can perform multi device and multi parameter analysis to make the data actionable.

Data Access

Environmental data analytics needs to be made accessible in a user-friendly way. Envizom™ generates data insights in various formats like printable reports and downloadable CSVs. Data transfer integration to a 3rd party application or external IT infrastructure is possible through Oizom® APIs.



Data Publishing

Dissemination of environmental data is critical for public awareness. This can trigger environmental actions among the mass audience. Using various data publishing mediums, environmental health advisory can be served at once. The data publishing is possible through outdoor LED Display Boards, TV Screens, and integrable web widgets.

Environmental Actions

Oizom is committed to making environmental data more apprehensible by offering immediate alerts for timely decisions. Data-driven suggestive actions are provided to the authorities to mitigate any significant future risk, such as an industrial accident or natural/man-made hazard.



Data Automation

Threshold based alerts can now be triggered using the Automation module in Envizom. User defined limits can be assigned to specific parameters. On breaching such limits, 3rd party equipment like mist cannons can be switched ON/OFF. This empowers the stake holders to take timely corrective actions without any human dependency.



Trusted by

60+ Countries



Solutions Installed in

65+ Cities



Total Devices Installed

1000+



Total Population Covered

200 million+

Global Presence



Accurate Air Quality Monitoring And Advanced Data Analytics



Get in touch



306, Indraprasth Corporate,
Prahlanagar, Ahmedabad - India

✉ contact@oizom.com / connect@oizom.com

☎ +91 88666 60025 / 39