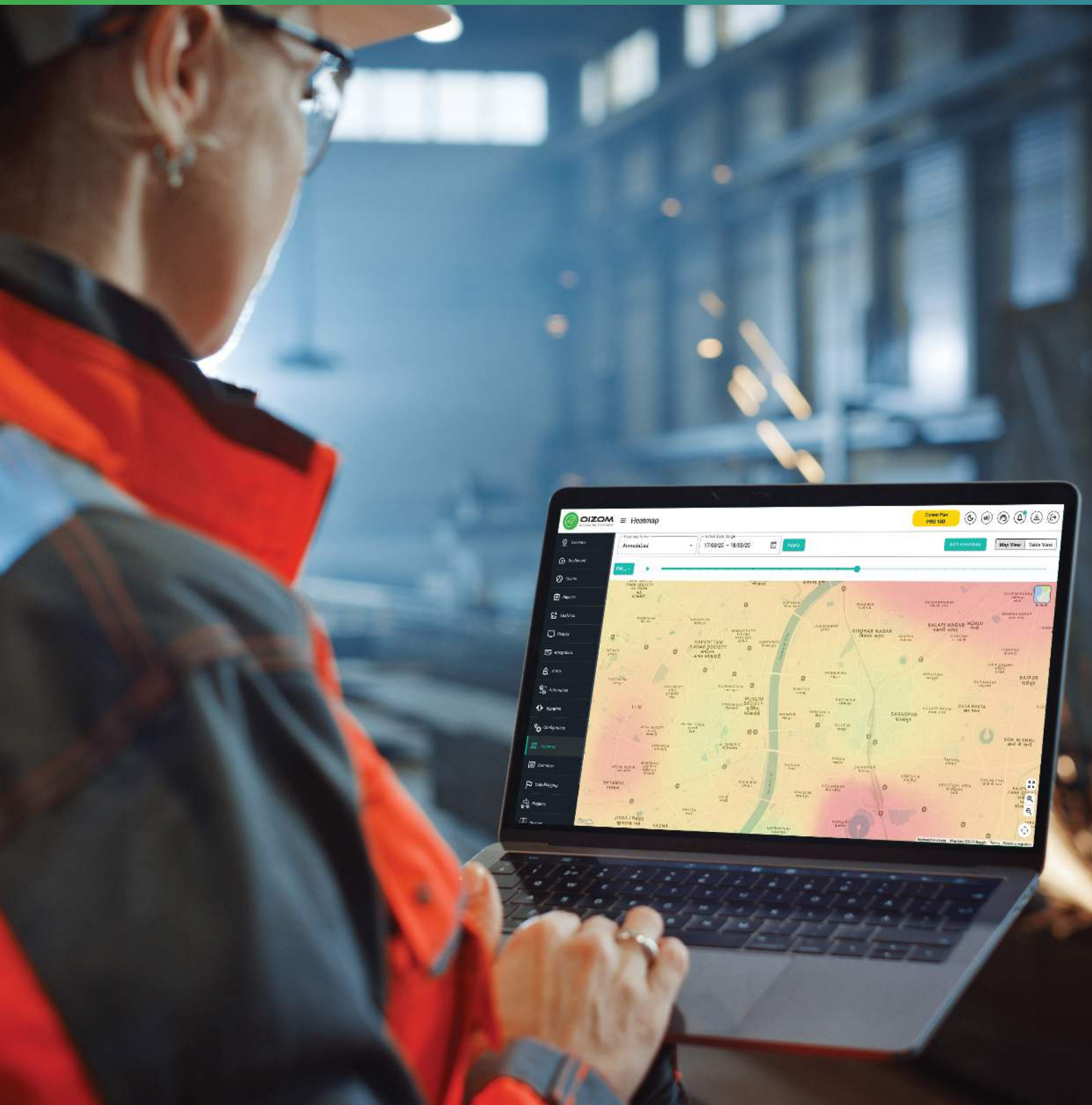
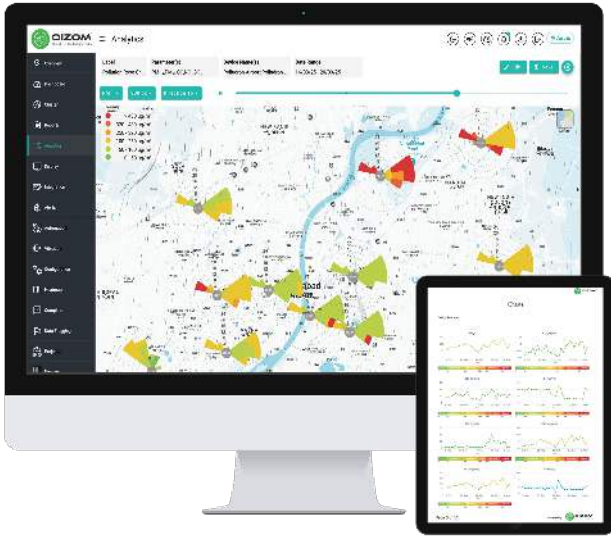


# Envizom<sup>™</sup>

Advanced Environmental Monitoring Software  
for Professionals



# About Envizom™



Envizom™ is Oizom's Environmental visualisation & analytics platform, built to turn complex air quality data into actionable insights. Providing remote visibility & control, it consolidates data from multiple sites, parameters, & devices into a single, intuitive dashboard. Our Environmental Data Interpretation Engine, powered by Artificial Intelligence & Machine Learning algorithms, provides accurate, real-time data, helps identify pollution sources, & understands directional trends. From city-wide comparisons to site-specific trends, smart multi-dimensional analytics enable comparisons across locations, parameters, & time spans. Envizom™ uses secure servers for data storage and on-premise storage is also supported.

The Dashboard module shows the data in different widgets, whereas the Analytics module provides a comprehensive analysis of environmental data, comparing various parameters, equipment, & chronology. In addition, Envizom™ also offers advanced modules like heated map, analytics, smart alerts, & process automation.

## Envizom™ Features



### Real-Time Data

Envizom™ platform offers real-time data visualisation of all environmental parameters.



### Automated Reports

Get automated reports every day/ week/ month and download quick reports to understand and analyse the air quality data with different formats.



### Smart Alerts

Set alerts based on predefined threshold values and send notifications to the respective users through SMS, Email and Push notifications.



### Advanced Analytics

Analyze and compare environmental data of multiple devices and various parameters with different methods, like device comparison, parameter comparison, and pollution rose.



### Trusted Data Protection

Envizom™ is certified and security-tested with global standards like IEC 62443, OWASP, SAN 25, and TMC security.



### All Data Accessibility

Envizom™ connects with existing AQM stations, reference analyzers & legacy non-IoT setups, bringing all environmental data online.



### Endorse Your Brand

Customize the Envizom™ platform by adding your brand logo to endorse your brand.



### Easy To Integrate

Through our REST APIs, data from all the Oizom® products can be integrated into any third-party software platform.



### Process Automation

Enable process automation using our relay-based module and set thresholds to automate the integrated systems.



### Integrate External Sensors

Integrate and monitor data of third-party accessories such as Vibration, Noise Class 1 Compliant, Lightning, Evaporation, & Soil sensors.

# Why Choose **Envizom™**

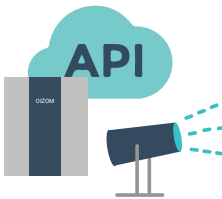


## Multi Level User Management

Envizom™ offers a multi-level user hierarchy with Admin, Users, and Sub-users. Admin and Users have the right to add, edit, and delete users, software modules, and devices as per the project requirements. The admin can set the software module expiration date, prevent unauthorized modification or data removal, and control the number of visible devices.

## Tech Support

Oizom® provides remote and on-field technical support. We also have a ticketing system to maintain all support-related issues. We maintain a 24-hour SLA to ensure a prompt and professional response. The technical team helps the onsite personnel to carry out troubleshooting of the issue.

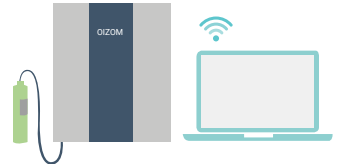


## Supports Third Party Devices

Using APIs of third-party devices, data can be visualised on Envizom™. Thus, users can access and analyse environmental data from their multiple devices on our platform.

## Calibration Module

With an on-device calibration software module, our partners and users can calibrate Oizom equipment in the lab or on-site. Users can also view and access historical calibration data.



## Remote Diagnostics

Oizom's architecture enables remote diagnosis for all devices. The tech team performs proactive maintenance, including remote calibration updates for optimal performance and over-the-air firmware updates to keep your device secure and functioning at its highest efficiency.

# Envizom™ Modules

## INSIGHTS - Visualize Your Environment In Real-Time



### Overview

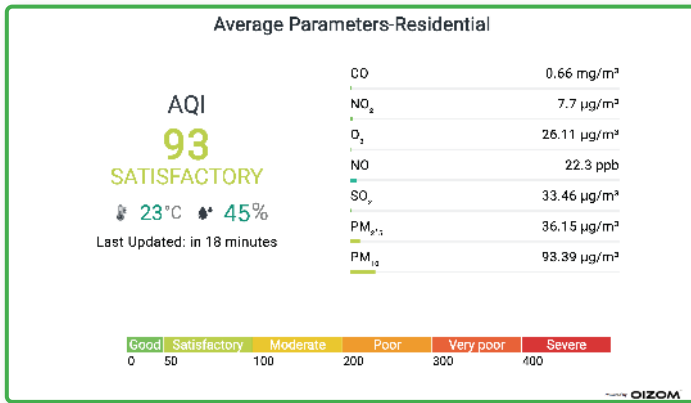
The overview module provides users with a bird's eye view of the multiple type of devices and the real-time air quality index with data of various parameters.



### Dashboard

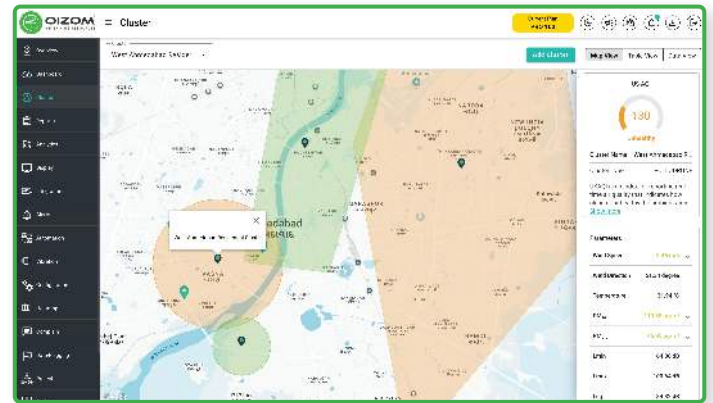
The dashboard is a complete visualisation module for users to analyse environmental data with Forecasting and Rose Charts.





## Display

The display module is used to create custom screen displays, sharing environmental insights via smart TV to spread awareness & allow data-driven actions.



## Cluster

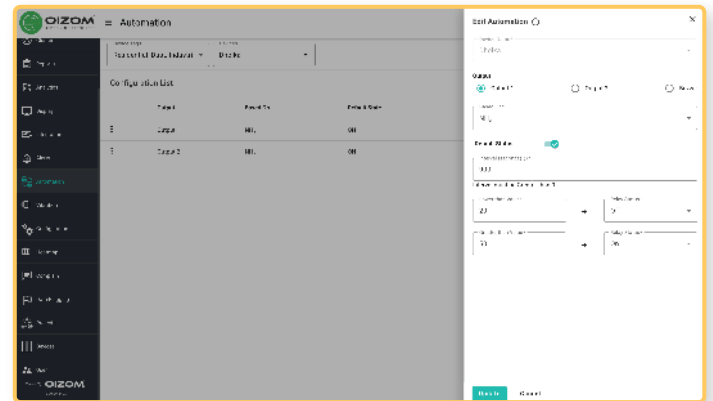
The cluster module lets users group specific devices and can display an average of their selected devices' data.

## ACTION - From Thresholds To Triggers



## Vibration

With smart vibration sensor integration, the vibration module provides real-time & historical ground vibration data in mm/s and g-force in Hz via secure APIs or wired connections.



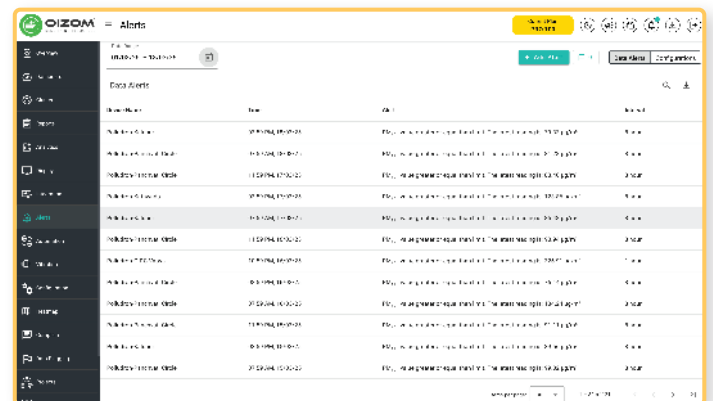
## Automation

An automation module can be utilised to trigger external equipment with a 2-channel relay switch.



## Reports

The reports module lets user control the automated report generation for each device. These are print-ready reports with interactive charts and analysis.

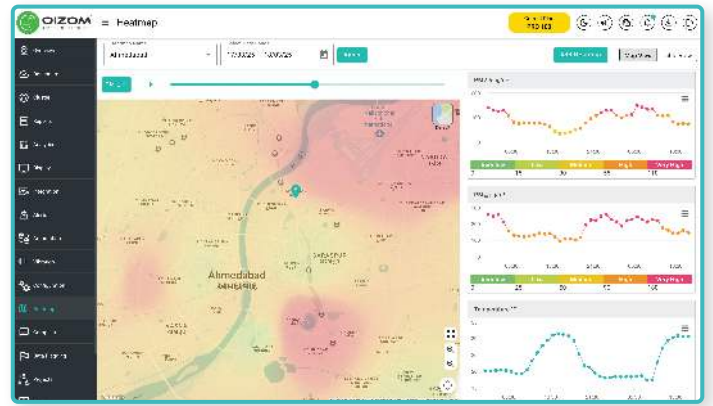


## Alerts And Notifications

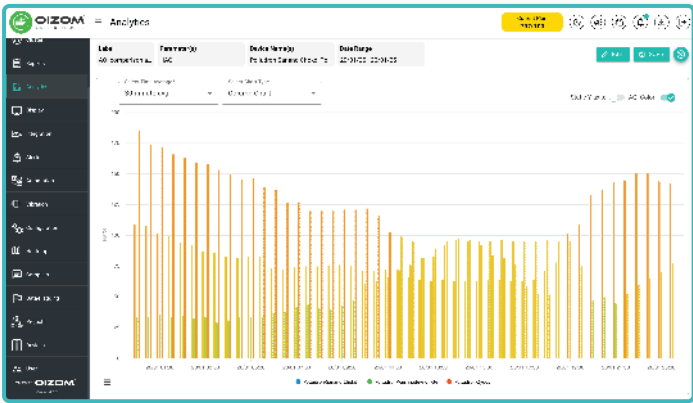
The Alerts Module notifies the user for the specific condition through SMS and E-mails.

[illegible]

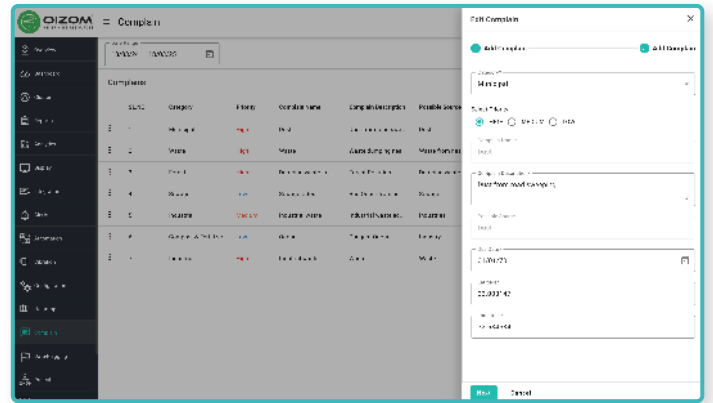
Environmental data can be flagged into categories such as invalid, failure, calibration, maintenance, etc. and can be reported with color coded charts.



Using custom Inverse Distance Weighting algorithm combines met-factors to generate accurate heatmaps. This deterministic interpolation enhances prediction by estimating values on nearby data points.



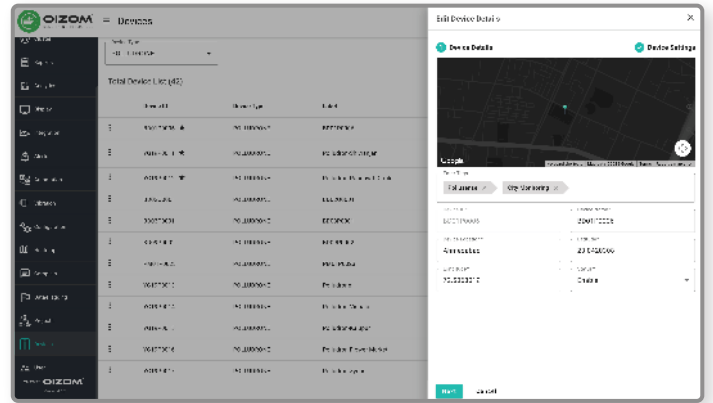
The Analytics module enables users to review comprehensive analysis of environmental data in different formats.



The complain module lets users track, add, & categorise complaints. Complaints from 3<sup>rd</sup> party platforms can be onboarded via APIs.

[illegible]

The user module allows admins and to create multiple users account, assign software modules & devices, and also select AQIs based on geography.



The Devices module lets users view all registered devices on a single screen. The user can manage, and edit their devices' information.

# Solution Architecture

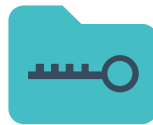


# Privacy First Platform



## Data Privacy

The data shared with the client uses an encryption server through Secure Socket layers. Envizom™ also uses AES encryption for connection that adds to data safety.



## Data Ownership

Envizom™ creates a secure and encrypted password combination for the user login. Oizom® ensures 100% privacy of the data and doesn't share without relevant permissions.



## Data Transparency

Data collected from Oizom® equipment runs through the Environment Data Interpretation Engine. It processes various algorithms and eliminates environmental impact interferences on the sensors.



## Certifications



OWASP  
Open Web Application  
Security Project



IEC 62443-4-1



Security Tested



100w Cybersecurity  
Practices



TCM  
SECURITY

# Envizom™ Capabilities

**74**

different range of PARAMETERS

**2.5 Million**

data points MEASURED everyday

**120,000+**

alerts GENERATED yearly



## Visualisation & Analytics

Envizom™ web-based air quality monitoring software enables professionals to remotely monitor and analyze air quality data. Users can track multiple devices and parameters for better insights.

Envizom™ generates data insights in various formats, like printable reports and downloadable CSVs. Data transfer integration to a 3rd party application or external IT infrastructure is possible through Oizom® APIs.

## Data Access



## Smart Display

Using various data publishing mediums, environmental health advisory can be served at once. With Envizom, air quality data can be displayed on LED boards, TV screens, and web widgets to raise public awareness.

Oizom® makes environmental data more understandable by offering immediate alerts for timely decisions. Data-driven suggestive actions help prevent significant future risks, such as industrial accidents and natural or man-made hazards.

## Environmental Actions



## Process Automation

Threshold-based alerts can now be triggered using the Automation module in Envizom™. User-defined limits can be assigned to specific parameters. On breaching such limits, 3rd party equipment like mist cannons can be switched ON/OFF.



Trusted by

**80+ Countries**



Solutions Installed in

**90+ Cities**



Total Devices Installed

**3500+**



Total Population Covered

**250 million+**

## Global Presence



**Changing the way Industries monitor air quality**



Get in touch



House No.2, Garden View Corporate House,  
Opp. Bodakdev Auda Garden, Ahmedabad, India

✉ [contact@oizom.com](mailto:contact@oizom.com) / [connect@oizom.com](mailto:connect@oizom.com)

☎ +91 88666 60025 / 39